

## 8G+ 1 SFP Web Smart Switch

**Gigabit Ethernet Solution** – LevelOne GSW-0841 Gigabit switch equips 8 Gigabit ports that lead you to a real Gigabit connection. Users are now able to transfer large and high bandwidth-needed files faster and hence get a real efficiency improvement. In addition to the copper ports, the one of the ports support fiber connection with the equipped SFP ports for obtaining long-distance communication.

**Fast and Reliable Technology** -- GSW-0841 offers users with fast and reliable network. The store-and-forward architecture filters errors and forwards packets in a non-blocking environment. Flow control ensures the correctness of data transmitting. The 802.3x and backpressure flow control mechanisms work respectively for full and half duplex modes. This device supports Nway auto-negotiation protocol that detects the networking speed and the duplex modes (Full/Half) automatically. Auto-MDI/MDI-X function alleviates the effort to use crossover cables.

**Web-based Management Interface** -- Friendly web management features are ready for users easily to configure and maintain the device through a general web browser. You can partition the switch into 8 groups using port-based VLAN technology. This switch also supports Quality of Service (QoS) to prioritise traffic for time-sensitive applications.

**Easy to Use** -- For instant error detection, the switch is equipped with a full range of LEDs to help you monitor and troubleshoot problems on your network. The slim and unique design fits easily in any space-limited location. Users can locate the switch on the desktop. With the accessory kits, the switch can either be stacked or mounted to the rack to save space.



**GSW-0841**

### Related Products



**GSW-2420**  
24-port Gigabit Switch



**GSW-1641**  
16G + 1 SFP Switch



**GSW-2440**  
20G Web Smart Switch

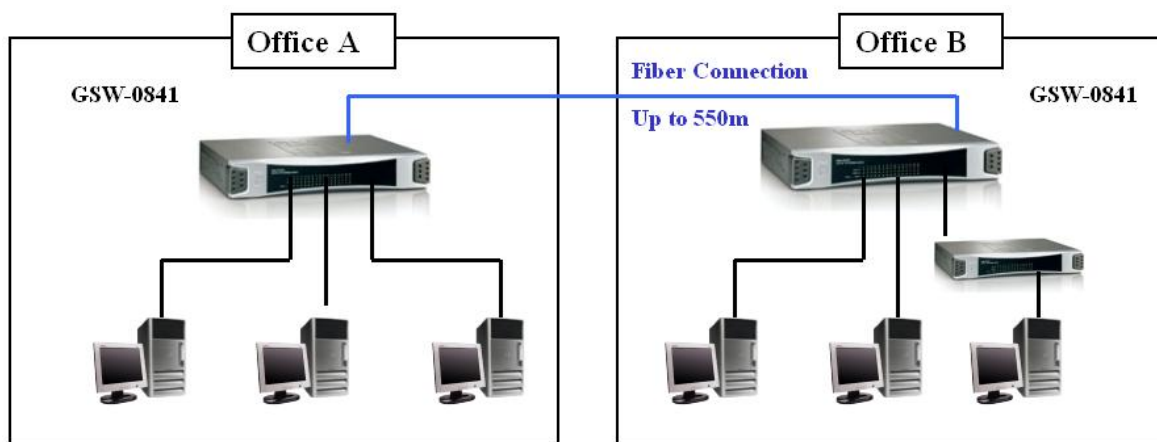
### Key Features

- Complies with IEEE 802.3, 802.3u, 802.3ab and 802.3z
- 8 x 10/100/1000 Mbps RJ-45 Nway ports
- 1 x SFP for optional fibre optical communication
- Up to 16Gbps Backplane bandwidth
- Supports 8K absolute MAC addresses entries
- Supports 180K Bytes RAM for data buffering
- Supports 9K bytes Jumbo frame
- Supports 4 trunk group and trunk member up to 7
- Support QoS for better communication quality
- Front-panel diagnostic LEDs
- Supports back-pressure (half duplex) and flow control (IEEE 802.3x)
- Web-based management interface
- Internal power adapter

## Technical Specification

- **Standards Compliance**  
IEEE 802.3: 10 BASE-T  
IEEE 802.3u: 100 BASE-TX  
IEEE 802.3z/ab: Gigabit Ethernet  
IEEE 802.3x Flow Control for Full-Duplex
- **Interface**  
8 x 10/100/1000 Mbps RJ-45 ports  
1 x SFP port
- **Protocol**  
CSMA/CD
- **Switching Method**  
Store-and-Forward switching architecture
- **Transfer Rate**  
14,880 pps for 10Mbps  
148,800 pps for 100Mbps  
1,488,000 pps for 1000Mbps
- **Cabling**  
Ethernet: 2-pair UTP/STP Cat.3,4,5, EIA/TIA-568 100-ohm  
Fast Ethernet: 2-pair UTP/STP Cat. 5, EIA/TIA-568 100-ohm  
Gigabit Ethernet: 4-pair UTP/STP Cat.5, EIA/TIA-568 100-ohm
- **Backplane**  
16 Gbps
- **MAC Address Table**  
8K entries per device
- **Buffer**  
180KBytes per device
- **LEDs**  
Per Device: Power  
Per Port: 10/100Mbps Link/ACT (green);  
100/1000, Link/ACT
- **Power Supply**  
100-240VAC/50-60Hz universal input; Internal power Supply
- **Power Consumption**  
6.24 Watts (max)
- **Temperature**  
Operating: 0°C -40°C
- **Humidity**  
Operating: 10% - 90% Non-Condensing
- **Dimension**  
270mm(W) \* 187mm(H) \* 43mm(D)
- **EMI and Safety**  
FCC class A, CE, VCCI Class A

## Product Diagram



## Ordering Information

- GSW-0841: 8G + 1SFP Web Smart Switch